



## SNYDER, SCURRY COUNTY, TEXAS

### MARKET:

This location gains exposure to everyone! Downtown traffic – yes! Oilfield traffic - yes! Out-of-town travelers through Snyder – yes! Business traffic – yes! You can't go wrong with this display for Snyder and Scurry County!

### LOCATION:

SW corner of 25th Street & Avenue I

### HIGHWAY/STREET:

180 (25th Street)

### ORIENTATION:

Side of Pavement - South  
For Traffic - Westbound

### FACE:

Position - Cross Read  
Size - 10' H x 24' W  
Illuminated - Yes

### TERM:

12, 24 & 36 Months

### GPS:

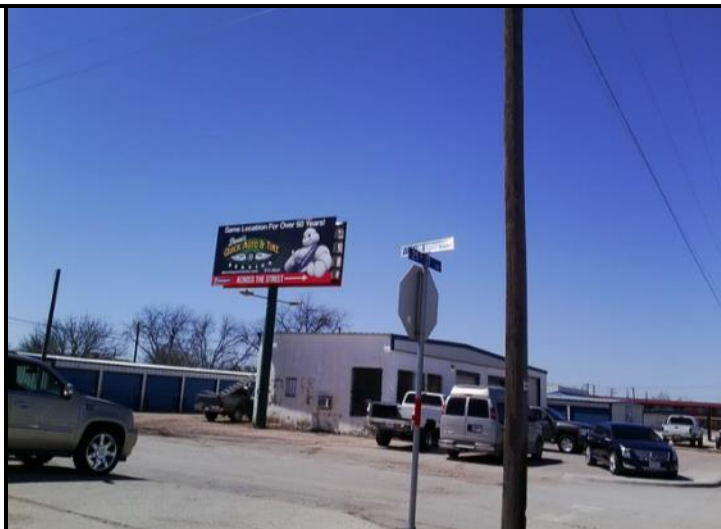
Latitude: 32.7169  
Longitude: -100.9067

### WEEKLY IMPRESSIONS:

52,000

### PANEL ID:

TSC-20B



For More Information, Please Call

877.583.3801

E-mail - [sales@lookoutdoor.biz](mailto:sales@lookoutdoor.biz)